

25VX



400 Production Court
Elizabethtown, KY 42701
Phone: 800.538.1447 Fax: 270.737.0419
www.ihices.com



High-power clean engine.

Equipped with large engine to deliver substantial performance in combination with the variable pump with power shift.



Closer distance between bucket and backfill blade.

By optimizing attachment geometry, digging performance near the backfill blade has been improved.



Joystick lever and roomy operator's seat.

Joystick lever control enables precision operation.



Full-opening cover.

The engine cover and right side cover all can easily be fully opened for easy maintenance.

Eco-friendliness and

- Engine compliant for EC Stage IIIA and EPA Tier4.
- Conform to the EC low noise regulation.
- 4 post canopy (ROPS&TOPS) equipped as standard.
- Swing parking brake equipped as standard.

Easy Operation

- Closer distance between bucket and backfill blade.
- A large backfill blade makes backfilling easier and offers high durability.
- Joystick lever control enables precision operation.
- Keeps boom drift at minimal levels.

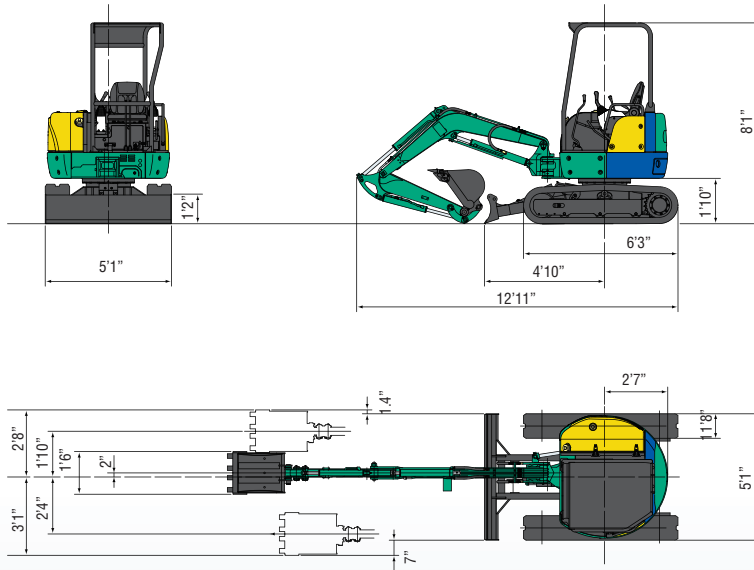
Easy Maintenance

- Sintering metal bush extends greasing interval.
- Aluminum radiator and oil cooler resist rusting.
- Segmented boom cylinder hoses for easier replacement.
- Full-opening engine cover for easy maintenance.

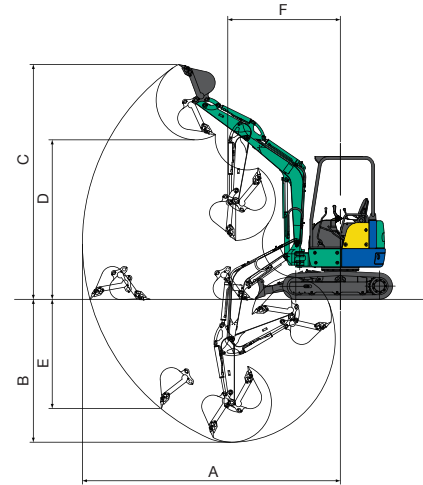
Rugged Body

- The engine cover and the side cover are rugged pressed steel.
- Equipped with rugged backfill blade.
- Bucket cylinder hoses are placed inside the arm.

■ Dimensions



■ Working Range



	4post or Cabin
A Max. digging radius	14'9"
B Max. digging depth	8'3"
C Max. digging height	13'3"
D Max. dumping height	9'
E Max. vertical digging depth	6'5"
F Min. front turning radius	6'4"
At right boom swing	4'11"



25VX

Mini Excavator

Standard Bucket Capacity: ISO 2.8 cu. ft.

2.5 metric ton, 5'1" Width.
Outstanding Performance, Compact Size.

■ 25VX Specifications

Model	25VX
• Performance	
Bucket capacity	2.8 cuft
Bucket width	18"
Operating weight : 4post (Cabin)	6175 lbs (6395 lbs)
Transportation weight : 4post (Cabin)	5911 lbs (6131 lbs)
Swing speed	10 mph
Travel speed (low/high)	1.5 mph/2.8 mph
Gradeability	30°
Ground pressure	3.9 psi
Max.bucket digging force	5698 lbs
• Engine	
Model	YANMAR 3TNV76
Rated output	18.42 hp/2300rpm
Fuel tank capacity	9.2 gal
• Boom swing system	
Type	Boom offset with hydraulic cylinder
Swing angle (L/R)	50° / 90°
• Hydraulic system	
Pressure	3000 psi
Pump hydraulic flow	7.9 gal/min × 2 + 5.2 gal/min
Type-Piston/Gear	2 Piston + 2 Gear
Auxiliary Flow	12.7 gal
• Backfill blade	
Size	61" × 14.4"
Lift above ground / Drop below ground	14.6" / 15.4"



Steel Shoe



Steel Cabin

■ Options

- Buckets
 - 12"
 - 18"
 - 24"
 - 39" Ditch Cleaning Bucket
 - 39" Hydraulic Swivel Bucket
- Enclosed Cab
- Steel Tracks
- Hydraulic Thumb
- Quick Coupler